



REPORT TO SUSTAINABILITY SUB COMMITTEE – 3 FEBRUARY 2016

**PUBLIC SECTOR CLIMATE CHANGE DUTIES REPORTING SUBMISSION
2014/15**

1 Recommendations

The Sustainability Sub Committee is recommended to:

- 1.1 Consider, discuss and approve the Council's completed submission for 2014/15 reporting year to the Scottish Sustainability Network on behalf of the Scottish Government.**

2. Discussion

2.1 Background

2.1.1 The Council is a signatory of the Scottish Climate Change Declaration (SCCD). The Council has reported on its activities and progress on tackling climate change under the headings contained in the previous SCCD template for a number of years.

2.1.2 This year a new template was provided in preparation for the introduction of mandatory reporting next year titled 'Public Sector Climate Change Duties Reporting Template'.

2.2 Public Sector Climate Change Duties Report 2014/15 Submission

2.2.1 The data to be reported on has been collected from Council Services and is attached to this report as Appendix 1.

2.2.2 Any observations from Monitoring officers have been included in the report.

3. Financial, Equalities and Staffing Implications

3.1 There are no direct staffing or financial implications arising from this report.

3.2 As this is a performance monitoring report an Equality Impact Assessment is not required as the report does not deal with actions which may impact adversely on groups with protected characteristics.

Stephen Archer

Director of Infrastructure Services

Report prepared by: Claudia Vilar, Sustainability & Climate Change Co-ordinator
14 January 2016

1 Organisational Profile

1a Name of the organization

Provide the name of the organisation that is the subject of this report ('the organisation').

Aberdeenshire Council

Type of organisation

Select from the options below

Local Authority

Number of FTE staff in the organisation

10,287

1d Alternative metrics used by the organisation

Specify any other metrics that the organisation uses to assess its performance in relation to climate change and sustainability.

Metric	Units	Value	Comments
	#N/A		
	#N/A		
Other (specify in comments)			

1e Overall budget of the organisation

Specify approximate £/annum for the report year.

£517,734,000.00

1f Report year

Specify the report year e.g. 2015/2016.

2014/15 (Financial year)

1g Organisational context

Provide a summary of the organisation's nature and functions that are relevant to Climate Change reporting.

Context: Aberdeenshire is largely rural in nature, covering an area of 6,313km² and a population of 260,500 (2014). There are six towns with a population over 10,000 (Ellon, Fraserburgh, Inverurie, Westhill, Stonehaven and Peterhead (the largest with a population of 18,537 (2011))). Aberdeenshire is divided into six administrative areas. (see Aberdeenshire Profile <https://www.aberdeenshire.gov.uk/media/4705/aberdeenshireprofile2015.pdf>). The large and rural nature means that transport contributes significantly to Aberdeenshires emissions. Many areas are also outwith the mains gas network, relying largely on oil and electricity for heating. Approximately 30% of the Aberdeenshire workforce commutes to Aberdeen City for work.

Aberdeenshire Council as an organisation (2014/15) comprised four Directorates

Infrastructure Services
Education Learning and Leisure
Housing and Social Services
Corporate Services

The majority of emissions fall within the remit of Infrastructure Services which comprises the following Services:

Economic Development
Planning and Building Services
Roads and Landscape Services
Property and Facilities Management
Transportation
Protective Services and Waste Management

(The corporate structure was subsequently revised in October 2015).

2014/15 The Council had 728 operational buildings including 150 primary schools, 84 Nurseries, 17 academies and 4 special needs schools.

The Councils also had 48 Industrial Estates/Business Parks including 720 nonoperational buildings (shops and

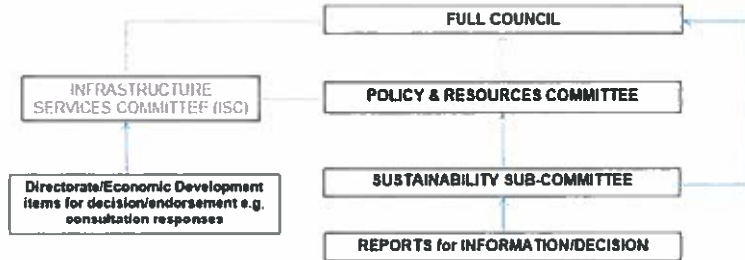
2 Governance, Management and Strategy

Governance and management

2a How is climate change governed in the organisation?

Aberdeenshire Council Environmental Policy (<https://www.aberdeenshire.gov.uk/media/6329/environmentalpolicy.pdf>) is countersigned by the Leader of the Council and the Chief Executive.
 Member oversight is via the Sustainability Sub-Committee (of the Council's Policy & Resources Committee) although this has no statutory powers; (to approve, review and monitor the Council's work in respect of sustainable development and climate change in order to ensure compliance with relevant statutory duties, with particular reference to the Climate Change Action Plan) it does have delegated authority on Sustainability and Climate Change issues. (The committee meets quarterly). Reports may also be considered by other committees, including Full Council, depending on content and remit.

Aberdeenshire Council Sustainability & Climate Change Committee Structure 2014



2b How is climate change action managed and embedded in the organisation?

Overall management is through Heads of Service throughout the Council, with day-to-day responsibility for co-ordinating overall climate change work being the role of the Sustainability and Climate Change Co-ordinator based within Infrastructure Services, however, key actions are co-ordinated by officers in all Services, for example, in property, waste, education, housing, economic development and transport.
 Heads of Service Group is chaired by Director of Infrastructure Service.
 A cross-service Sustainability Officers' Group includes representatives from all Services. It is chaired jointly by Heads of Service for Economic Development and Property and Facilities Management within Infrastructure Services.

<Insert Diagram Here>

Strategy

2c Does the organisation have specific climate change mitigation and adaptation objectives in its corporate plan or similar document?

Provide a brief summary of objectives if they exist.

Wording of objective	Name of document
Strong & Sustainable Communities	2013-17 Corporate Plan
Reduce emissions of CO2 and other greenhouse gases from council buildings, our operations and activities and respond to, mitigate and adapt to wider climate change impacts	Aberdeenshire Council Environmental Policy
We will reduce our carbon emissions by 44% by 2020	As noted in the minutes for the Sustainability Sub Committee - meeting 13/11/2013.

2d If yes, provide the name and/or link to any such document.

Climate Change Action Plan 2011-2015 <http://www.aberdeenshire.gov.uk/media/12102/climatechangeactionplan2011-2015.pdf>
 Environmental Policy Re-confirmed May 2015 <http://www.aberdeenshire.gov.uk/media/6329/environmentalpolicy.pdf>

2e Does the organisation have any plans or strategies covering the following areas that include climate change? Provide the name of any such document and the timeframe covered.

Topic area	Name of document	Time period covered	Comments
Adaptation	LDP	2012 onwards	

FORM 6
 PART 4

Business travel	Travel and Subsistence Proc	May 2014 onwards	Refer to sections 1 & 4 for climate change/sustainability aspects
Staff Travel	2011-2015 Climate Change	2011-2015	
Energy efficiency	2011-2015 Climate Change	2011-2015	
Fleet transport	2011-2015 Climate Change	2011-2015	
ICT	Innovate Aberdeenshire - Te	2015-2020	
Renewable energy	Renewable Energy Strategy SEAP under development	December 2004 onwards	
Sustainable/renewable heat	Fuel Choice Strategy	2013 onwards	
Waste management	2011-2015 Climate Change	2011-2015	
Water and sewerage			
Land Use	Aberdeenshire Land Use Str	2013-2015	
Other			

2f What are the organisation's top 5 priorities for climate change governance, management and strategy for the year ahead?
 Provide a brief summary of the organisation's areas and activities of focus for the year ahead.

1. Plan actions to deliver the 2016-2020 Climate Change Action Plan.
2. Introduce evaluation/screening procedure for reports on the basis of climate change act and health inequalities, so as to inform decision making in management meetings and committees.
3. Publish a North East of Scotland and Aberdeenshire SEAP (Sustainable Energy Action Plan) and establish governance arrangements with appropriate level of status and authority to oversee plan implementation.
4. Gain resource commitment by the Council to meet carbon reduction targets.
5. Per capita emissions reductions for council employees.

2g Has the organization used the Climate Change Assessment Tool (a) or equivalent tool to self-assess its capability / performance?
 If yes, please provide details of the findings of the self-assessment.

The CCAT tool can be accessed at <http://www.resourceefficientscotland.com/resource/resource-efficient-scotland-climate-change-assessment-tool-ccat>

(a) This refers to the tool developed by Resource Efficient Scotland for the purposes of self-assessing an organisation's capability / performance in relation to climate change.

Not to date.

Further information

2h Supporting information and best practice
 Provide any other relevant supporting information and any examples of best practice by the organisation in relation to governance, management and strategy.

3 Corporate Emissions, Targets and Project Data

Emissions

3a Corporate emissions from start of baseline year to end of report year
 Complete the table below using the greenhouse gas emissions total for the organisation calculated on the same basis as for its annual carbon footprint / management reporting or, where applicable, its sustainability reporting. Include greenhouse gas emissions from the organisation's estate and operations (a) (measured and reported in accordance with Scopes 1 & 2 and, to the extent applicable, selected Scope 3 of the Greenhouse Gas Protocol (b)). If data is not available for any year from the start of the baseline year to the end of the report year, provide an explanation in the comments column.

(a) No information is required on the effect of the organisation on emissions which are not from its estate and operations.

(b) This is the Greenhouse Gas Protocol developed by the World Resources Institute and the World Business Council on Sustainable Development which sets the global standard for how to measure, manage and report greenhouse gas emissions.

Reference year	Year	Year type	Scope 1	Scope 2	Scope 3	Total	Units	Comments
Baseline carbon footprint	2010/11					81,440	ICO,e	
Year 1 carbon footprint	2011/12	Financial (April to March)				76,673	ICO,e	
Year 2 carbon footprint	2012/13	Financial (April to March)				80,430	ICO,e	
Year 3 carbon footprint	2013/14	Financial (April to March)				73,414	ICO,e	
Year 4 carbon footprint	2014/15	Financial (April to March)				80,254	ICO,e	

Year 5 carbon footprint	2015/16	Financial (April to March)				-	tCO ₂ e	
Year 6 carbon footprint	2016/17	Financial (April to March)				-	tCO ₂ e	
Year 7 carbon footprint	2017/18	Financial (April to March)				-	tCO ₂ e	
Year 8 carbon footprint	2018/19	Financial (April to March)				-	tCO ₂ e	
Year 9 carbon footprint	2019/20	Financial (April to March)				-	tCO ₂ e	
Year 10 carbon footprint		0 Financial (April to March)				-	tCO ₂ e	
Year 11 carbon footprint		0 Financial (April to March)				-	tCO ₂ e	
Year 12 carbon footprint		0 Financial (April to March)				-	tCO ₂ e	
Year 13 carbon footprint		0 Financial (April to March)				-	tCO ₂ e	
Year 14 carbon footprint		0 Financial (April to March)				-	tCO ₂ e	
Year 15 carbon footprint		0 Financial (April to March)				-	tCO ₂ e	

3b Breakdown of emissions sources
 Complete the table below with the breakdown of emission sources from the organisation's most recent carbon footprint (greenhouse gas inventory); this should correspond to the last entry in the table above. Use the comments box to explain what is included within a category. If it is not possible to use a simple emissions factor (a), leave this field blank and provide the total in the emissions column.

(a) Emissions factors are published annually by the UK Government Department for Environment, Food and Rural Affairs (Defra)

Emission source	Scope	Consumption data	Units	Emission factor	Units	Emissions (tCO ₂ e)	Comments
Grid Electricity (generation)	Scope 2	62,129,009	kWh	0.49426	kg CO ₂ e/kWh	30,707.9	Operational Buildings
Grid Electricity (transmission & distribution)	Scope 3	62,129,009	kWh	0.04322	kg CO ₂ e/kWh	2,685.2	Operational Buildings
Natural Gas	Scope 1	71,404,576	kWh	0.18497	kg CO ₂ e/kWh	13,207.7	Operational Buildings
Gas oil	Scope 1	15,118,566	kWh	0.27212	kg CO ₂ e/kWh	4,114.1	Operational Buildings & Quarries
Kerosene - Burning Oil	Scope 1	17,237,494	kWh	0.24667	kg CO ₂ e/kWh	4,252.0	Operational Buildings & Quarries
LPG (kWh)	Scope 1	1,709,281	kWh	0.21451	kg CO ₂ e/kWh	366.7	Operational Buildings
Grid Electricity (generation)	Scope 2	18,315,193	kWh	0.49426	kg CO ₂ e/kWh	9,052.5	Street Lighting
Grid Electricity (transmission & distribution)	Scope 3	18,315,193	kWh	0.04322	kg CO ₂ e/kWh	791.6	Street Lighting
Water - Supply	Scope 3	460,861	m ³	0.34410	kg CO ₂ e/m ³	158.6	Water usage
Water - Treatment	Scope 3	383,030	m ³	0.70850	kg CO ₂ e/m ³	271.4	sewerage
Diesel	Scope 1	3,239,669	litres	2.60240	kg CO ₂ e/litre	8,430.9	Fleet - diesel
Petrol	Scope 1	75,079	litres	2.19140	kg CO ₂ e/litre	164.5	Fleet - petrol
Diesel	Scope 1	786,555	litres	2.60240	kg CO ₂ e/litre	2,046.9	Roads - Red Diesel
Gas oil	Scope 1	22,789	kWh	0.27212	kg CO ₂ e/kWh	6.2	Roads - Harbours
LPG (kWh)	Scope 1	164,924	kWh	0.21451	kg CO ₂ e/kWh	35.4	Roads - Propane
LPG (Litres)	Scope 1	14,400	litres	1.50225	kg CO ₂ e/litre	21.6	Landscape - Greenhouses
Diesel	Scope 1	90,122	litres	2.60240	kg CO ₂ e/litre	234.5	Landscape - Red Diesel
LPG (kWh)	Scope 1	132	kWh	0.21451	kg CO ₂ e/kWh	0.0	Propane
Business travel - car	Scope 3	8,711,221	mile	0.30486	kg CO ₂ e/mile	2,655.7	DEFRA's "average car unknown fuel"
Refuse Municipal to Landfill	Scope 3	3,334	tonnes	289.83554	kg CO ₂ e/tonne	966.3	
Mixed recycling	Scope 3	4,011	tonnes	21.00000	kg CO ₂ e/tonne	84.2	
					Total	80,253.9	

3c Generation, consumption and export of renewable energy
 Provide a summary of the organisation's annual renewable generation (if any), and whether it is used or exported by the organisation.

Generation of renewables	Total generated (kWh)	Total consumed by the organisation (kWh)	Total exported (kWh)	Comments
Renewable electricity	42,625	42,625	-	PVs
Renewable heat	7,146,890	7,146,890	-	Biomass Boilers
Other 1 (specify in comments)				
Other 2 (specify in comments)				

Other 3 (specify in comments)

Targets

Organisational targets

Name of target	Type of target	Target	Units	Boundary/scope of target	Baseline year	Baseline figure	Units of baseline	Target completion year	Comments
Carbon emissions reduction target	percentage	44	total % reduction	All emissions	2010/11	81,440	tonnes	2019/20	

Projects and changes

3e Estimated total annual carbon savings from all projects implemented by the organisation in the report year
 If no projects were implemented against an emissions source, enter "0".
 If the organisation does not have any information for an emissions source, enter "Unknown".
 If the organisation does not include the emissions source in its carbon footprint, enter "N/A".

Emissions source	Total estimated annual carbon savings (tCO ₂ e)	Comments
Electricity	-	
Natural gas	-	
Other heating fuels	-	
Waste	28	Internal waste recycling scheme
Water and sewerage	-	
Travel	46	Pool Vehicle scheme
Fleet transport	-	
Other 1 (specify in comments)		
Other 2 (specify in comments)		
Other 3 (specify in comments)		
Total	74	

3f Detail the top 10 carbon reduction projects implemented by the organisation in the report year
 Provide details of the top 10 projects (based on estimated emissions savings) implemented in the report year.

Project name	Funding source	First full year of CO ₂ e savings	Capital cost (£)	Operational cost (£/annum)	Project lifetime (years)	Primary fuel/emission source saved	Estimated carbon savings per year (tCO ₂ e/annum)	Estimated costs savings (£/annum)	Savings figures are estimated or actual	Behaviour Change	Comments
Installation of biomass boilers at Buchan House	Aberdeenshire Council's Capital P	2015/16							Estimated		reports
Pool Vehicle Expansion Project	Aberdeenshire Council's Capital P	2012/13			5	Petrol	125		Estimated		The existing network of pool
Electric Pool Vehicle Project	Aberdeenshire Council's Capital P	2014/15				Petrol			Estimated		Integrate electric vehicles into
Modal Shift - Private to Public Transport	Aberdeenshire Council's Capital P	2014/15				Petrol			Estimated		was integrated into the corporate Travel Policy to promote a shift from private transport to non-travel and
Street Light Replacement Programme	Aberdeenshire Council's Capital P	2014/15	400,000		6	Grid Electricity (generation)			Estimated		lights with low energy LED lanterns

3g Estimated decrease or increase in emissions from other sources in the report year
 If the organisation's corporate emissions increased or decreased for any other reason in the report year, provide an estimate of the amount and direction.

Emissions source	Total estimated annual emissions (tCO ₂ e)	Increase or decrease in emissions	Comments
Estate changes			
Service provision			
Staff numbers			
Other 1 (specify in comments)			
Other 2 (specify in comments)			
Other 3 (specify in comments)			
Total			

Anticipated annual carbon savings from all projects implemented by the organisation in the year ahead
 If no projects are expected to be implemented against an emissions source, enter "0".
 If the organisation does not have any information for an emissions source, enter "Unknown".
 If the organisation does not include the emissions source in its carbon footprint, enter "N/A".

Emissions source	Total estimated annual carbon savings (tCO ₂ e)	Comments
Electricity	UNKNOWN	House and Alford, Elton, Mackie, Peterhead, Banchory and Weethill Academies. Streetlight replacement programme.
Natural gas	UNKNOWN	Biomass Boiler install Elton Academy
Other heating fuels	UNKNOWN	Biomass Boiler install Alford Academy
Waste	UNKNOWN	Proposed landfill gas utilisation project at Crows Nest LFS, Banchory
Water and sewerage		
Travel	UNKNOWN	Pool vehicle replacement programme
Fleet Transport	UNKNOWN	Route tracking project
Other 1 (specify in comments)		
Other 2 (specify in comments)		
Other 3 (specify in comments)		
Total		

2) Estimated decrease or increase in emissions from other sources in the year ahead
 If the organisation's corporate emissions are likely to increase or decrease for any other reason in the year ahead, provide an estimate of the amount and direction.

Emissions source	Total estimated annual emissions (tCO ₂ e)	Increase or decrease in emissions	Comments
Estate changes			
Service provision			
Staff numbers			
Other 1 (specify in comments)			
Other 2 (specify in comments)			
Other 3 (specify in comments)			
Total			

3) Total carbon reduction project savings since baseline year
 If the organisation has data available, estimate the total emissions savings made from projects since the organisation's baseline year.

Total savings	Total estimated emissions reduction (tCO ₂ e)	Comments
Total project savings since baseline year	1,187	

Further information

3a Supporting information and best practice
 Provide any other relevant supporting information and any examples of best practice by the organisation in relation to corporate emissions, targets and projects.

4 Adaptation

Assessing and managing risk

4a Has the organisation assessed current and future climate-related risks?

If yes, provide a reference or link to any such risk assessment(s).

The Climate Change Risk Register - Reviewed twice yearly by group containing reps from SEPA, SE, Scottish Flood Forum, Adaptation Scotland & Aberdeenshire Council. Group is chaired by the Sustainability & Climate Change Co-ordinator.
High residual risks reported as part of reporting cycle to Infrastructure Services Departmental Management Team by Council Risk Manager. Aim is to robustly assess risks and to shift emphasis from reaction and response to forward planning, future proofing and resilience in the context of adapting to climate change.
Further facilitating this shift is what lies behind the work with Climate X Change on the Economics of Climate Risks.

4b What arrangements does the organisation have in place to manage climate-related risks?

Provide details of any climate change adaptation risk management procedures, strategies, action plans and any adaptation policies and actions included across policy areas.

Strategic Environmental Assessment of the Strategic Development Plan and the Local Development plan are the places where this assessment takes place, auditing proposed actions to balance climate change risks with economic development objectives. Behind everything we do is 'planning's principal purpose' to promote sustainable economic development. Statutory consultancies can request additional information on at risk sites.
Design guidance suggests that climate change will bring with it increased risk of pluvial, fluvial and coastal flooding. The increased intensity of storms and rising sea levels require to be assessed in term of flood risk and factored into emerging Local Flood Risk Management Plans and the actions and objectives within these plans. Such calculations are already included in two major schemes being developed at Stonehaven and Huntly. Guidance SG LSD6 in the Aberdeenshire Local Development Plan requires a hydrological, drainage impact and/or flood risk assessment or geomorphology assessment, which includes an allowance for freeboard and climate change where appropriate for all new developments.

Taking action

4c What action has the organisation taken to adapt to climate change?

Include details of work to increase awareness of the need to adapt to climate change and build the capacity of staff and stakeholders to assess risk and implement action.

To further embed adaptation, future proofing and resilience.
To continue to work with Climate X Change and Adaptation Scotland on project looking into the economics of climate risk mitigation looking at alternative methodologies to traditional cost benefit analysis.

4d Where applicable, what progress has the organisation made in delivering the policies and proposals referenced N1, N2, N3, B1, B2, B3, S1, S2 and S3 in the Scottish Climate Change Adaptation Programme(a) ("the Programme")?

If the organisation is listed in the Programme as an organisation responsible for the delivery of one or more policies and proposals under the objectives N1, N2, N3, B1, B2, B3, S1, S2 and S3, provide details of the progress made by the organisation in delivering each policy or proposal in the report year. If it is not responsible for delivering any policy or proposal under a particular objective enter "N/A" in the 'Delivery progress' column for that objective.

(a) The Programme aims to address impacts identified for Scotland in the UK-wide climate change risk assessment which are not otherwise addressed by the UK-wide National Adaptation Programme through policy in relation to reserved matters.

Objective	Discretionary reference	Theme	Policy / Programme reference	Delivery progress (year)	Comments
Understand the effects of climate change and their impacts on the natural environment.	N1	Natural Environment	N1-8	Aberdeenshire Council as Lead Local Authority for the North East Local Plan District under the Flood Risk Management (Scotland) Act 2009, will publish the final Local Flood Risk Management Plan for the North East in June 2016	
Understand the effects of climate change and their impacts on the natural environment.	N1	Natural Environment	N1-10	Such calculations are already included in two major schemes being developed at	

Support a healthy and diverse natural environment with capacity to adapt.	N2	Natural Environment	N2-2	Increased woodland planting on Open space Reduced maintenance and further tree planting and woodland creation. Land use strategy pilot includes initial stages of program to coordinated	Small contribution to mitigating CO2 through increased tree planting in addition to reduction in emissions as a result of reduced maintenance. Increased biodiversity and
Support a healthy and diverse natural environment with capacity to adapt.	N2	Natural Environment	N2-11	Local Nature Conservation Sites Review Aberdeenshire Coastal Path Feasibility Study 2013-2015 Final Report Embedded into LDP 2016	Protection of locally important sites through inclusion on supplementary guidance to the Local Development Plan.
Support a healthy and diverse natural environment with capacity to adapt.	N2	Natural Environment	N2-20	Extreme weather events including heavy rainfall with local impacts, increased intensity of storms and rising sea levels require to be assessed in term of flood risk and factored into emerging Local	Information/action is also available in the 'Aberdeenshire Coastal Path Feasibility Study 2013-2015 Final Report'
Sustain and enhance the benefits, goods and services that the natural environment provides.	N3	Natural Environment		N/A	
Understand the effects of climate change and their impacts on buildings and infrastructure networks.	B1	Buildings and infrastructure networks	B1-13	Factored into emerging Local Flood Risk Management Plans. Such calculations are already included in two major schemes being	
Provide the knowledge, skills and tools to manage climate change impacts on buildings and infrastructure.	B2	Buildings and infrastructure networks		N/A	
Increase the resilience of buildings and infrastructure networks to sustain and enhance the benefits and services provided.	B3	Buildings and infrastructure networks	B3-6	2046 total number of components to be upgraded in housing stock including: cavity/external/internal wall insulation, heating systems, external doors and windows. Private homes in	
Increase the resilience of buildings and infrastructure networks to sustain and enhance the benefits and services provided.	B3	Buildings and infrastructure networks	B3-7	See B3-6 progress	
Increase the resilience of buildings and infrastructure networks to sustain and enhance the benefits and services provided.	B3	Buildings and infrastructure networks	B3-8	See B3-6 progress	
Understand the effects of climate change and their impacts on people, homes and communities.	S1	Society		N/A	
Increase the awareness of the impacts of climate change to enable people to adapt to future extreme weather events.	S2	Society		N/A	

Support our health services and emergency responders to enable them to respond effectively to the increased pressures associated with a changing climate.

S3

Society

N/A

Review, monitoring and evaluation

What arrangements does the organisation have in place to review current and future climate risks?

Provide details of arrangements to review current and future climate risks, for example, what timescales are in place to review the climate change risk assessments referred to in Question 4(a) and adaptation strategies, plans and policies in Question 4(b).

Aberdeenshire Council as Lead Local Authority for the North East Local Plan District under the Flood Risk Management (Scotland) Act 2009, will publish the final Local Flood Risk Management Plan for the North East in June 2016 which will set out how flooding will be managed between 2016 and 2021. Aberdeenshire Council are developing their Local Development Plan 2016 which will include planning advice on flooding.

4f What arrangements does the organisation have in place to monitor and evaluate the impact of the adaptation actions?

Please provide details of monitoring and evaluation criteria and adaptation indicators used to assess the effectiveness of actions detailed under Question 4(c) and Question 4(d).

The principle climate change risks that we monitor are the flood level predictions and long term implications of potential global population movement.

Risk assessment is generally undertaken once every 5 years as part of research into the LDP Main Issues Report. The Local Flood Risk Management Plan will be reviewed mid-cycle and again towards the end of the six-year cycle of the plan, in preparation of the next Local Flood Risk Management Plan.

Future priorities for adaptation

4g What are the organisation's top 5 climate change adaptation priorities for the year ahead?

Provide a summary of the areas and activities of focus for the year ahead.

1. To further embed adaptation, future proofing and resilience throughout each service.
2. To continue to assess climate threats for adaptation opportunities.
3. To ensure that adaptation is included in the 2016-2020 Climate Change Action Plan.
4. To continue to work with Climate X Change and Adaptation Scotland on a project looking into the economics of climate risk.
5. To pilot the Combined Impact Appraisal which examines the impacts of proposals on climate change and health

Further information

4h Supporting information and best practice

Provide any other relevant supporting information and any examples of best practice by the organisation in relation to adaption.

5 Procurement

5a How do procurement policies contribute to compliance with climate change duties?

Provide information relating to how the procurement policies of the organisation have contributed to its compliance with climate changes duties

The Council's Corporate Procurement Strategy 2012-2015 refers extensively to "Sustainable Procurement - (Environmental)" factors. A "Responsible Procurement Policy" was developed to supplement a toolkit detailing sustainability-related themes to be considered in procurement decisions. The Council's Procurement Strategy beyond 2015 will be subject to statutory guidance to follow the Procurement Reform (Scotland) Act 2014. In addition, the Council has developed a "Sustainable Procurement/Community Benefits" Guidance Note to guide procurement activity. The Guidance Note will evolve to reflect regulations/statutory guidance to follow.

5b How has procurement activity contributed to compliance with climate change duties?

Provide information relating to how procurement activity by the organisation has contributed to its compliance with climate changes duties.

The following list represent an illustrative sample of Aberdeenshire Council tenders where procurement activity was striving to deliver a reduction in CO2 emissions and where climate change considerations were a key part of the procurement justification.
Provision of Reactive Heating for Council Owned Housing, Supply and Delivery of Vehicles and Heavy Plant, Managed Print Service, Supply and Installation of Bunkered Fuel and AdBlue Systems, Supply and Delivery of Vehicles and Items of Heavy Plant, Provision of Estate Management Services, Provision of Haulage for Dry Recyclables, Framework Agreement for the Provision of Historic Environmental Services, Stonehaven Flood Protection Scheme, Provision of Energy Management Services, Various works contracts pertaining to bridges, Use of the Home Energy Efficiency Programme Scotland (HEEPS) Area Based Scheme (ABS), Working in close collaboration with Scotland Excel, Recycle/Refuse, Street lighting - lower emission lumens.

Further information

5c Supporting information and best practice
Provide any other relevant supporting information and any examples of best practice by the organisation in relation to procurement.

The Council has secured finalist status in the GO (Government Opportunity) Awards in the Procurement Initiative of The Year category. A summary of the submission is as follows:
Go Awards Category: Procurement Initiative of The Year – Other Organisation

6 Validation and Declaration

6a Internal validation process
Briefly describe the organisation's internal validation process, if any, of the data or information contained within this report.
Internal Audit reviews the progress towards the delivery of the Climate Change Action Plan.

6b Peer validation process
Briefly describe the organisation's peer validation process, if any, of the data or information contained within this report.
This report was peer reviewed by the Service Manager (Industry Sectors) - Economic Development

6c External validation process
Briefly describe the organisation's external validation process, if any, of the data or information contained within this report.

6d No Validation Process
If the organisation has not undergone any peer or external validation that relates to the information in this report, indicate this in the space provided and the reasons why this has not been undertaken.
Resourcing - both time and financial

6e Declaration
I confirm that the information in this report is accurate and provides a fair representation of the organisation's performance in relation to climate change.

Name:	Claudia Vitar
Role in the organisation:	Sustainability and Climate Change Coordinator
Date:	27/11/2015