



From mountain to sea

Aberdeenshire
COUNCIL



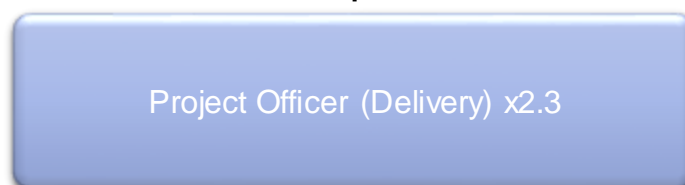
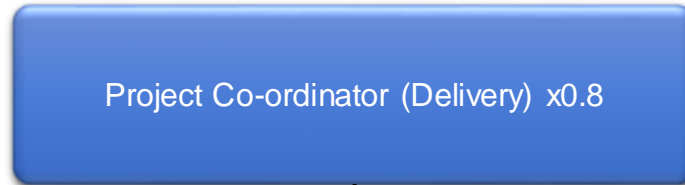
Planning Information & Delivery Team Strategy

2022-2025



From mountain to sea

Planning Information & Delivery Team



From mountain to sea

Overview of role and function of the Planning Information & Delivery Team

Delivery:

- Facilitating development by working to eliminate barriers, creating certainty and enabling dialogue/ communication between stakeholders
- Taking a project management approach towards the delivery of sites (identified in the LDP) to ensure the effective co-ordination of resources between the parties involved to deliver development
- Undertaking specific place based projects
- Co-ordinator role on specific consultations and legacy cases





From mountain to sea

Overview of role and function of the Planning Information & Delivery Team

Information & Research:

- Key responsibility to collect and analyse data on a range of topics and present the findings
- Contributing towards the preparation, assessment and monitoring of the LDP
- Preparation of the Housing Land Audit, Employment Land Audit, Housing Needs and Demands Assessment and Vacant & Derelict Land Survey response
- Responding to requests for information from both internal and external customers, undertaking relevant research exercises and providing advice on how to interpret information

Aberdeenshire's Housing Market
September 2021
A publication by the Planning Information and Delivery Team

Household Income in Aberdeenshire
June 2021
A publication by the Planning Information and Delivery Team

Aberdeenshire's Economy 2021
Unemployment – January 2020 to May 2021

Claimant count rates

Month	Aberdeenshire (%)	Scotland (%)
Jan 20	~4.5	~4.5
Feb 20	~4.5	~4.5
Mar 20	~4.5	~4.5
Apr 20	~4.5	~4.5
May 20	~4.5	~4.5
Jun 20	~4.5	~4.5
Jul 20	~4.5	~4.5
Aug 20	~4.5	~4.5
Sep 20	~4.5	~4.5
Oct 20	~4.5	~4.5
Nov 20	~4.5	~4.5
Dec 20	~4.5	~4.5
Jan 21	~4.5	~4.5
Feb 21	~4.5	~4.5
Mar 21	~4.5	~4.5
Apr 21	~4.5	~4.5
May 21	~4.5	~4.5

Percentage change in unemployment

Region	Percentage Change
Scotland	75%
Aberdeenshire	103%

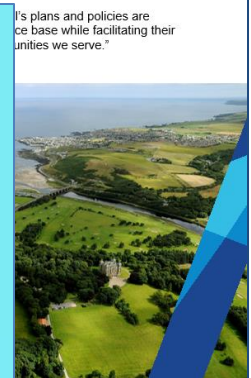
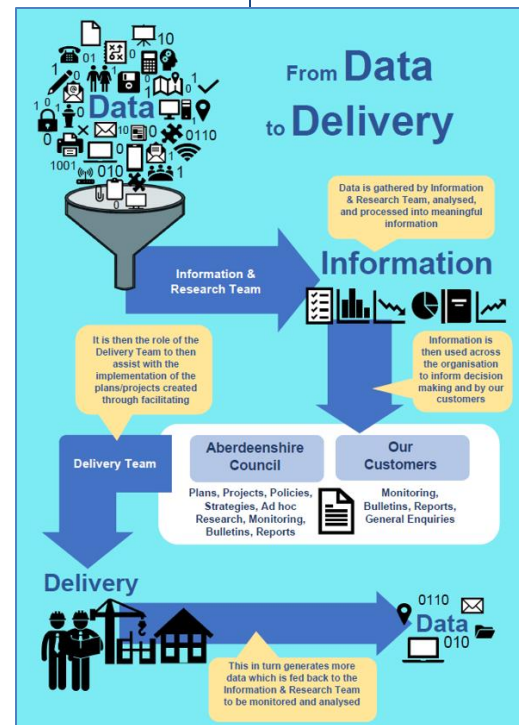
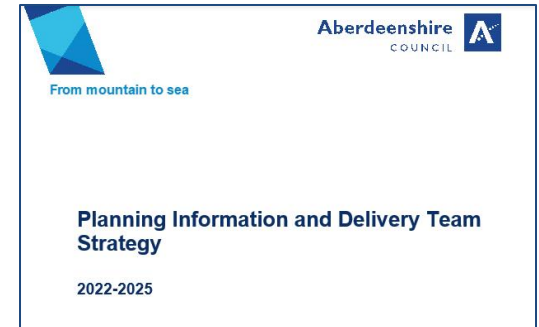
Banff & Buchan Area Profile 2021
Area 592 km²
Population: 35,725 (2019)
% Share of Each Age Group in Total Population:
Age 0-15: 17%, Age 16-24: 13%, Age 25-44: 21%, Age 45-64: 21%, Age 65+: 28%
Population Density: 60 people per km²
Settlements with more than 500 people:
Fraserburgh: 1,740; Portsoy: 1,260; Aberdeen: 590; Banff: 4,100; Inverlochty & Cairnburg: 1,350; Whitehills: 1,050; Macduff: 3,950; Sandhaven: 1,320; Roseharty: 840.



From mountain to sea

PID Team Strategy

- PID Team Vision: *“We aim to ensure Aberdeenshire Council’s plans and policies are based on an accurate and reliable evidence base while facilitating their timely delivery to the benefit of the communities we serve.”*
- Strategy period: 2022-2025
- Annual Report (Bulletin)



...s plans and policies are
...ce base while facilitating their
...unities we serve.”



From mountain to sea

Aberdeenshire
COUNCIL



Thank you